

## Instafile

### An Automatic Document/File/Record storage and retrieval system

Decision making in all sections of any organization is done based on information that is available in records. Records are thus the base of functioning of any organization.

Orderly storage of documents and retrieval is a concern at all organizations. Maintaining records of past few years is a statutory requirement in some sections, while some record keeping is mandated for business functioning. Variety in the sizes of records, file numbering based on document functions, different document referencing/retrieval frequency, continuous change in the people referring the documents, non-traceability of earlier placed records, etc, are some of the common concerns faced by management. Approx 65% of time spent on document storage and retrieval is non-productive but tedious activity like searching through records, shifting records, and rearranging moved records.

With complete indigenous manufacturing in India, advanced R&D and linking to user IT network, Statfield has been able to direct the utility of Automated Vertical Carousels to address the traditionally menial considered but voluminous task of filing - and transform it into a simple, organized, aesthetically appealing, controlled, well lit, safe storage system - INSTAFILE.



INSTAFILE literally stands tall when compared with conventional documentation storage with its features like,

- High record storage
- Optimum floor space utilization - vertical space utilization.
- Can accommodate variety in documents to be stored
- Organized Storage with ease to refer record reference
- Minimized access time
- Access Authorization shelf wise
- Customized shelf arrangement to accommodate
  - Vertical filing
  - Multi-tier
  - Suspended filing
  - Box files
  - Lever arch
  - Drawers
- Appealing aesthetics that uplift office interiors
- Best in class control scheme with
  - Document search and trace feature
  - Report generation for easy traceability
    - ↳ Department wise
    - ↳ Development wise
    - ↳ Revision wise
    - ↳ Period wise.
  - Specially designed document management system
  - Configurable control scheme

#### Application Areas :

Banks, Hospitals, Pharmaceuticals, Manufacturing sector, Government Offices, Public Works Departments, Schools, Universities, as well as offices in India and abroad.

## Other Storage and Retrieval Products

Retriever



Multiplex



Stackart



### Statfield Equipments Pvt. Ltd.

Material Handling Division

H. O. & Works: S. No. 1073/1-2-3, Pirangoot, Tal.- Mulshi, Dist- Pune 412 111. (India)

Tel.: +91-020-66570100, Fax: +91 020 - 22922134

E-mail: mhs.sales@statfieldequipments.com

statfield  
equipments

# STORE • ACCESS • RETRIEVE



An Effective  
Storage  
& Retrieval  
System

instammat®

## Yashprabha Group

Since last, 50 years Yashprabha Group has a strong market presence. All the brands under the group are market leaders in their areas of operation. Each brand is well respected and has pioneered several revolutionary concepts.



Electronics	Engineering	Bio-energy
Minilec	Intech Statfield	Intech Energy
Monitoring, Protection & Control Devices, Microprocessor based Annunciators, Scada Systems, Variable Frequency Drives, Softstarters, Printed Circuit Boards.	Surface Coating Applicators Surface Coating Plants Material Handling Solutions Automated Storages Systems	Bio-lubricants Organic Manure

## ENGINEERING - INTECH and STATFIELD

Giving justice to its 'Innovative' Technologies, the Intech Group of companies have pioneered a wide range of products for a variety of applications in Surface Coating, Material Handling & Automated Storage.

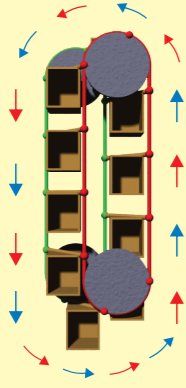
A modest beginning in Surface Coating in 1973, has blossomed into a group of companies dealing in all the different elements of a total surface coating plants viz. Powder / Liquid Coating Manual / Automatic Applicators, Booths, Pre-treatment plant, Conveyors, Ovens, Vertical Carousels, Retrieval systems etc.

Statfield has contributed to the legacy of the Yashprabha Group by pioneering variety of technologies related to surface coating in India. Bringing power coating to India is a notable achievement for Statfield. This was further followed by introduction of variety surface coating techniques.

Venturing into material handling was a natural extension of the surface coating business. Optimizing production activities and increasing productivity are direct deliverables from the material handling section. Statfield's team work along with the customer team to 'Grasp-Think-Solve' material handling requirements.

## Operating Principle

Vertical Storage Carousel® INSTAMAT- works on the Paternoster Principle. A paternoster is an elevator which consists of a chain of open compartments that move slowly in a loop up and down inside a building without stopping. The principle was earlier used for people movement, who could step on or off at any floor of the building that the wanted. The same technique is also used for moving shelves to store hugh amounts of items in an organized and secure manner while making use of the vertical height available in a building.



## Modes of Operation

- Automatic Mode
- Semi-Automatic Modent
- MMS (Material Management System) Mode
- Manual Mode
- Power Failure mode

## In house Tests

Over 5 decades of experience and more than 1000 successful installations are all backed by streamlined and stringent Quality Checks at the manufacturing level.

Following are some of the Quality Checks that a Storage System undergoes before the unit reaches the Customer.

### Deflection Test

Statfield provides flexibility in the load bearing capacity of storage systems : from 50kg per shelf to 500kg per shelf. Every Storage & Retrieval System is tested with a dead load of maximum capacity and cleared for sustainability of defined storage capacity. This ensures controlled deflections, while simultaneously testing performance of stiffeners.

### Full Load Test

Subject to dead load testing, each Storage & Retrieval System is tested for proving defined performance. Motor currents are checked and verified to remain under limits for operation of the system at maximum defined load.

### Water Glass Test

Stability and balance of shelves while the shelves move with the unit is of prime importance. This test ensures perfect balancing of shelves with the movement of the Storage and Retrieval System, under defined load conditions. A glass filled with water is kept on any one shelf and shelves are moved in forward and reverse directions. Balancing of the glass and zero water spillage of water from the glass are the quality clearance conditions.

### Cladding Test

Special attention is paid for maintaining the aesthetics of the Storage and Retrieval Systems, which is mainly related to its flawless cladding. At Statfield it is ensured that with the complete assembly of the Storage and Retrieval System, gaps and inclinations in the self locking cladding are controlled within acceptable limits. Aesthetically appealing effect is assured after the complete erection and commissioning of the unit is done at the customer site.

Few of Our Clients



## AN EFFECTIVE STORAGE & RETRIEVAL SYSTEM



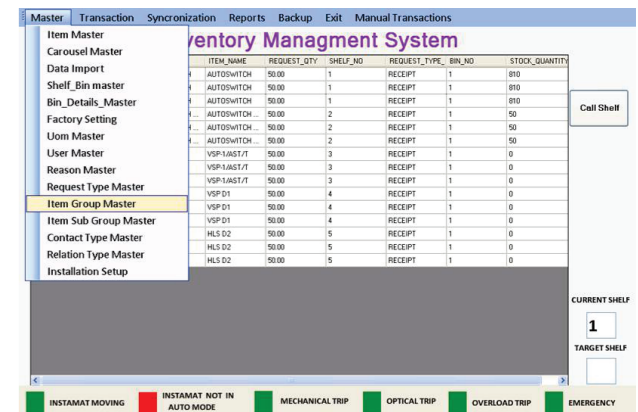
## Features

### Dust Proof and Free from Rodents

Protecting stored material from dust and rodent hazards is a repetitive, tedious and costly task. Instamat is equipped with cladding from all 10 sides making it dustproof and does not allow rodents to enter.

### Intelligent Efficient Material Management control scheme : iLink

- User Friendly with ERP interface
- User Access Control to regulate authority of material inward/outward
- Import data from user ERP into iLink
- Comprehensive with mailing facility



### Reports

- Carousel Item Master
  - Min-Max Level Report
  - Non-Moving Item Report
  - Shelf Status Report
  - Stock Report
  - Ledger Report
  - Transaction Report
- Complete material management flow**
- Unit of Measurement
  - Carousel to bin and material linking
  - Location identification
  - Material make master
  - Reason master to identify transactions/override
  - Facility to issue material as per entered bill of material
  - Transfer inward/outward material transactions to main ERP of user

### Aesthetical advantage

Instamat is equipped with boltless, self interlocking, powder coated cladding to suit any colour combination or corporate environment which gives it great aesthetical advantage over a conventional storage systems.

## Features

### Better Space utilization

Conventional storage methods are limited to a height of maximum 2.5 meters - height above which is usually wasted. Due to this floor space utilization increases resulting in material storage spread over a large area. With INSTAMAT, we organize material storage availing the unused but available vertical height upto 8 meters, free floor space for other activities while increasing the material storage capacity 10times of conventional storage capacity. Thus increased storage capacity in reduced floor space.

### Improved Tractability of stored material

Standard problem in conventional storage methods is re-ordering material simply due to no traceability in stock. With INSTAMAT and its stand alone inventory, component can be searched simply by entering its name, code, description or any associated relevant record data which is fed in while stock updation/retrieval. Material traceability is just at a click.

### Faster Material Availability - Less Access time

With conventional racking systems spread all over the stores material retrieval undergoes defined steps of search, reach, collect, retrieve from storage racks and/or aisles - a high time & effort utilizing activity. With Instamat you have an intelligent control - facility of moving in both clockwise and counter clockwise - using shortest path retrieving - reducing efforts & material retrieval time.

### Easy Operations - Lesser Fatigue

Bending, stretching, difficulty of placing/removing material from odd spaces, using ladders, small bruises while storage/retrieval, pains at joints/muscles are common problems - this is in addition to material movement to & fro storage location. With Instamat rather than moving around for material, material is moved to your service at a conveniently located access point at 1 meter height easy for human operation- 100% user friendly and less tiring.

### Improved Material Access Authentication

Conventional racking are open all the way for storage and retrieval of the material. Eventually such arrangement becomes operator driven as multiple operators are authorized for processing store-retrieve operation and often observed that individual convenience is preferred over a defined system. In Instamat access port, lockable sliding door is provided which restricts access to material storage. Password locks, access reports, transactions details, all ensure that operation reports are available to check use by authorized persons only.

## Applications

